



easiPieces

CUSTOMIZABLE • INVISIBLE
CLIP-IN VOLUME

— — — — —
JON RENAU



easiPieces

CUSTOMIZABLE • INVISIBLE
CLIP-IN VOLUME

100% REMY HUMAN HAIR

Designed with an undetectable low profile, clip-in easiPieces add subtle, balancing volume that complements a lightweight topper for a full, natural look

Made with the highest quality remy human hair on slim, slender polyurethane base designs – easiPieces are available in 3 hair lengths + 3 widths



TOPPER +
EASIPIECES



1

TOPPER

EASIPART
18" LENGTH



2

TOPPER + EASIPIECES

EASIPART
18" LENGTH

EASIPIECES
12" + 16" LENGTHS

SLENDER + SLEEK

Slim, polyurethane base designs
that lay flat against the head

LIGHTWEIGHT + INVISIBLE

Natural density that blends
seamlessly with hair or topper



BEFORE



1

BIOLOGICAL HAIR



2

TOPPER

EASIPART
18" LENGTH

AFTER WITH EASIPIECES



3

TOPPER + EASIPIECES

EASIPART
18" LENGTH

EASIPIECES
12" + 16" LENGTHS

MODEL IS WEARING COLOR
FS24/102S12 - LAGUNA BLONDE

1 - 16" LENGTH • 9" WIDTH [CROWN]
2 - 12" LENGTHS • 6" WIDTH [NAPE]
2 - 16" LENGTHS • 4" WIDTH [SIDES]
2 - 12" LENGTHS • 4" WIDTH [SIDES]

BEFORE



1

BIOLOGICAL HAIR

2

TOPPER

EASIPART XL
12" LENGTH

AFTER WITH EASIPIECES



3

TOPPER + EASIPIECES

EASIPART XL
12" LENGTH

EASIPIECES
8" + 12" LENGTHS

MODEL IS WEARING COLOR
FS4/33/30A - MIDNIGHT COCOA

1 - 12" LENGTH • 9" WIDTH [CROWN]
1 - 8" LENGTH • 6" WIDTH [NAPE]
2 - 12" LENGTHS • 4" WIDTH [SIDES]

HOW-TO: CHOOSE YOUR EASIPIECES

1

COLOR

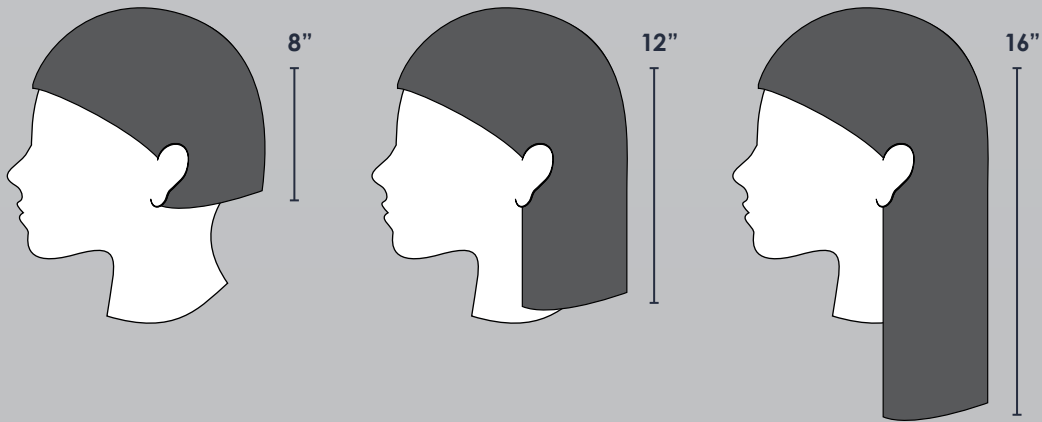
Find the color that best matches your biological hair or topper using the Jon Renau human hair color ring
[color of topper + easiPieces do not need to match]

2

LENGTH

Determine the length of easiPieces needed by measuring from the middle of the back + sides of your head to the end of your biological hair or topper hair

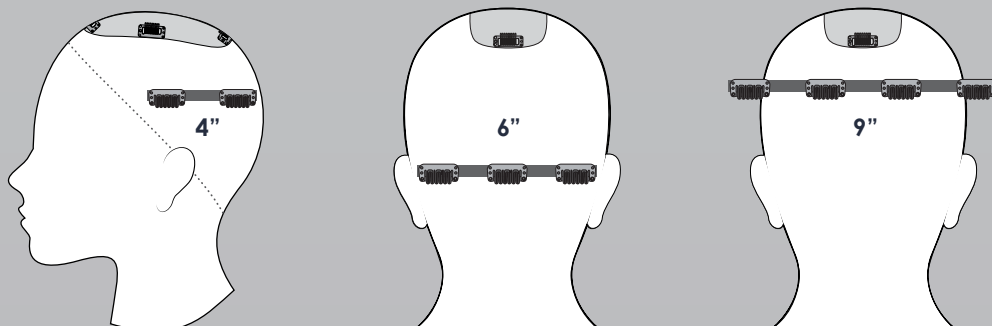
[If you are in-between lengths, choose the longer length. This can be trimmed by an alternative hair specialist]



3

WIDTH

Based on the areas that need more volume, choose your correct width



HOW-TO APPLY

To apply, simply section the hair + clip-in easiPieces where needed. Style as desired

AVAILABILITY

1

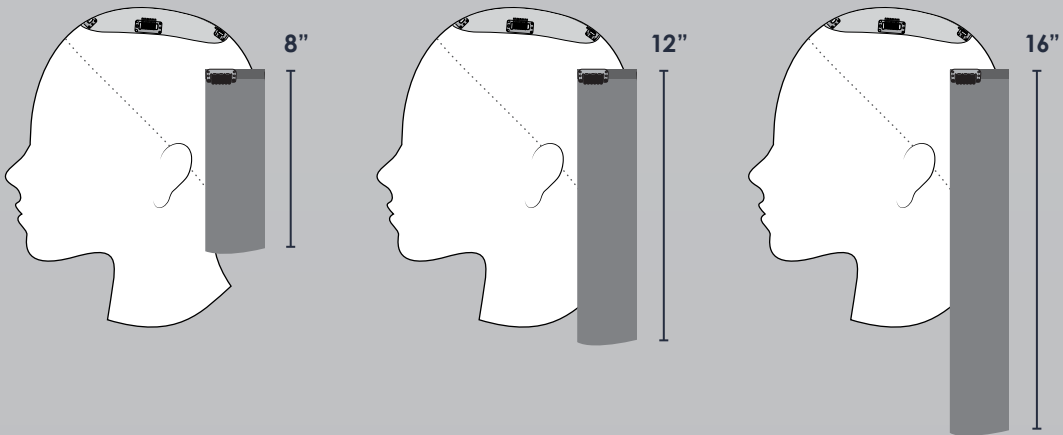
COLORS

1B, 4, 4RN, 4/27/30, 4/33, 6, 6RN, 6F27, 6/33, 8, 8RN, 8/30, 10H24B, 12/30BT, 14/24, 22MB, 27B, 27MB, 31/26, 33, 613RN, 12FS8, 12FS12, 14/26S10, 22F16S8, 24B/27CS10, 24B613S12, 24B18S8, FS2V/31V, FS4/33/30A, FS6/30/27, FS17/101S18, FS24/102S12, FS26/31S6

2

LENGTHS

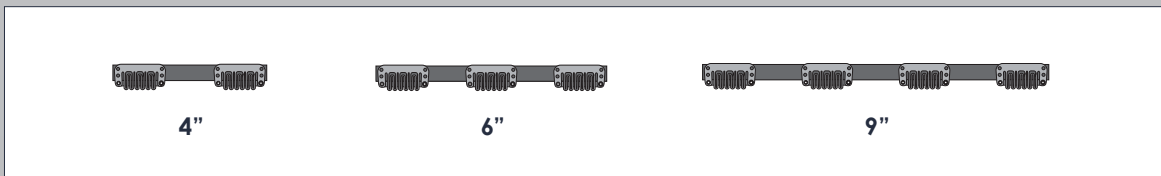
8" • 12" • 16"



3

WIDTHS

4" • 6" • 9"



ALL EASIEPIECES ARE SOLD INDIVIDUALLY TO CUSTOMIZE ANY LOOK.
WATCH OUR YOUTUBE VIDEOS FOR MORE STYLING IDEAS

easiPieces

JON RENAU

USA: 1.800.462.9447

CANADA: 1.877.750.9447

SOUTH AFRICA: +27 (0) 21 511 6767

JONRENAU.COM

B-20

